



CITY OF GILLETTE

www.gillettewy.gov

ADMINISTRATION

PHONE 307-686-5203

MEMORANDUM

TO: Mayor and Members of the City Council
FROM: Michael Cole, City Administrator
RE: General Information
DATE: May 22, 2026

The following meetings are scheduled for the week of **May 23-29, 2026**

Monday, May 25th Memorial Day Holiday - **City Offices Closed**

1. Attached please find a **news release** regarding **City Facilities Closed for Memorial Day** dated **May 21, 2026** provided by **Public Affairs Director Toscana**.
2. Attached please find **Wyoming Economic Indicators** dated **May 2026** provided by the **Wyoming Department of Administration & Information Economic Analysis Division**.

MC/adw

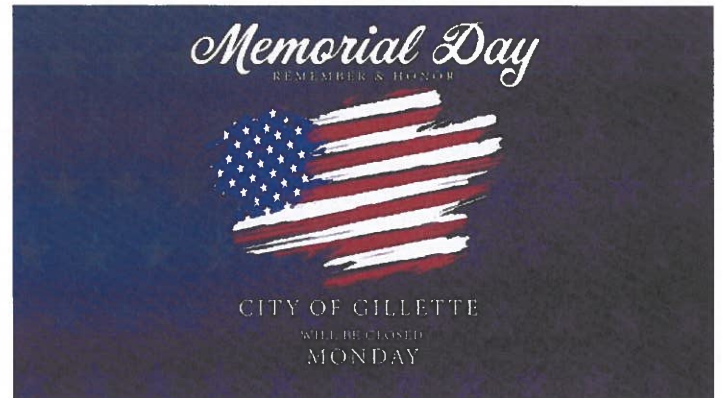
[Home \(https://www.gillettewy.gov/Home\)](https://www.gillettewy.gov/Home) / City Facilities Closed for Memorial Day

City Facilities Closed for Memorial Day

Published on May 21, 2026

City facilities will be closed on Monday, May 25, 2026 for Memorial Day.

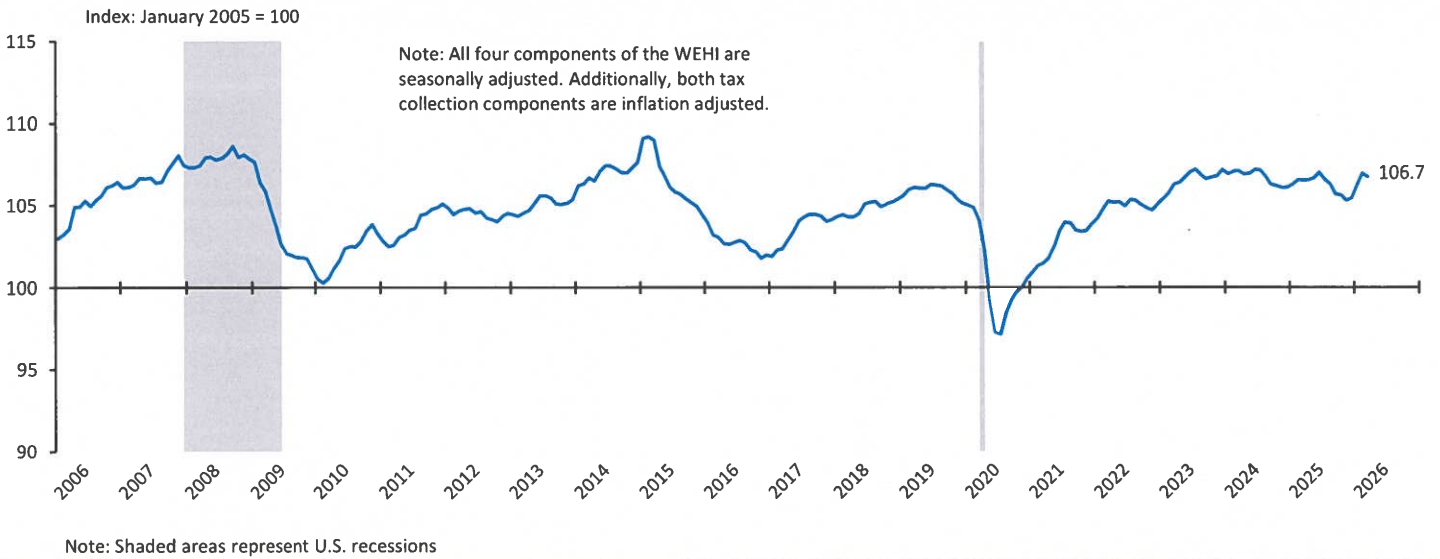
There will be no curbside trash service on Monday. Solid waste crews will run a double route on Tuesday, May 26 to pick up trash, recycling and yard waste for both Monday and Tuesday routes.



Tagged as:

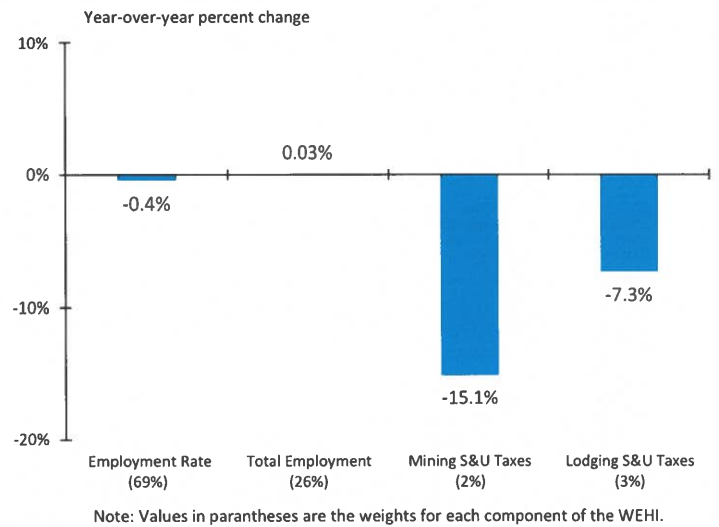
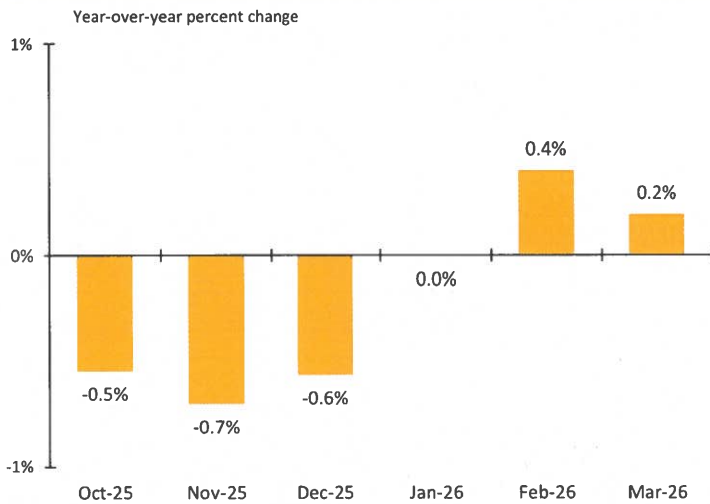
Events & Activities

► Figure 1: Wyoming Economic Health Index as of March 2026

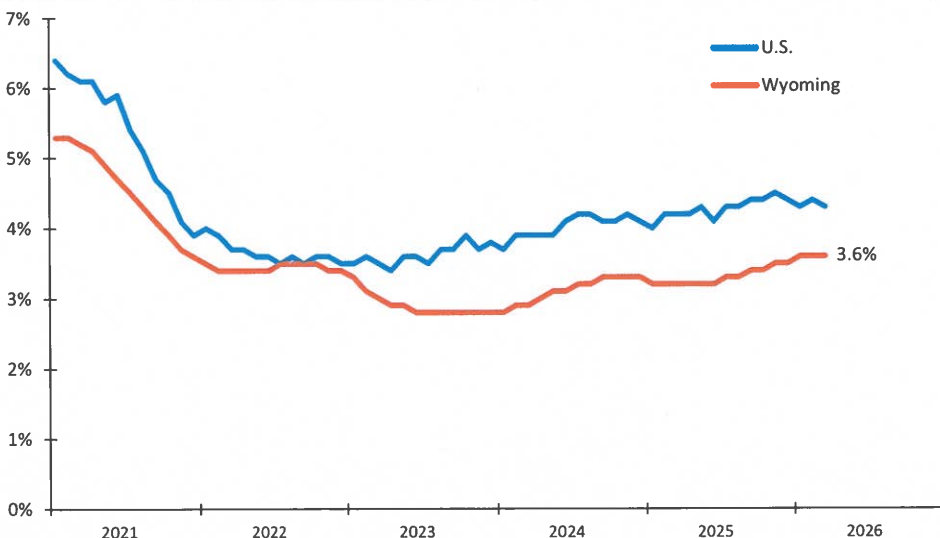


► Figure 2: Change in WEHI - Last 6 Months

► Figure 3: Change in Components of WEHI - March 2026



► Figure 4: Wyoming and United States Unemployment Rate (Seasonally Adjusted or SA)



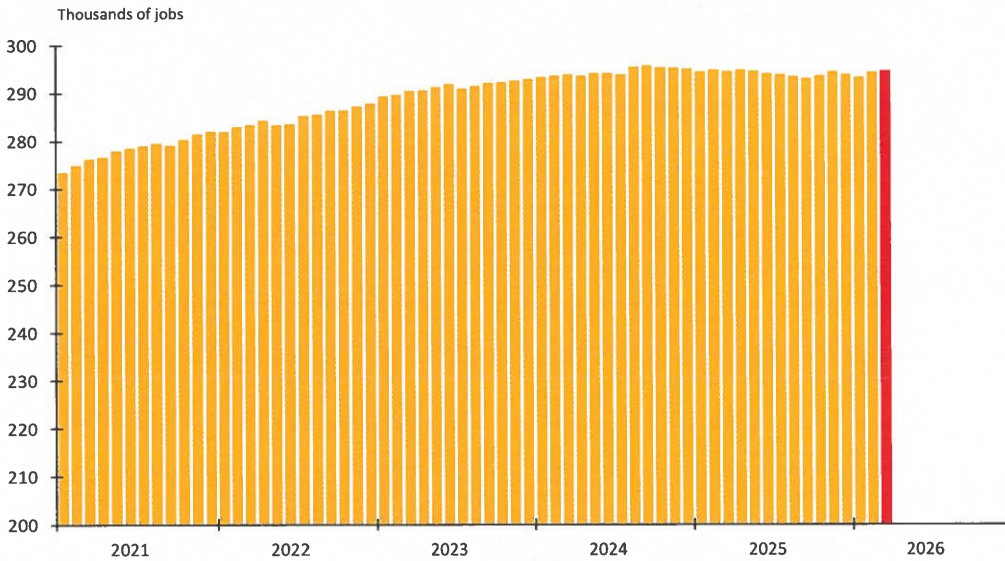
► **SUMMARY:** The Wyoming Economic Health Index (WEHI) reported a value of 106.7 in March 2026 (see Figure 1). This value is slightly higher than the March 2025 value of 106.5.

► As seen in Figure 2, in two of the past six months (October 2025 - March 2026), the WEHI reported year-over-year increases, with the largest increase occurring in February (+0.4%).

► One of the four WEHI components improved in March compared to March 2025 (see Figure 3). Total employment saw the only year-over-year increase, up 0.03%. Mining sales & use taxes declined the most, down 15.1%.

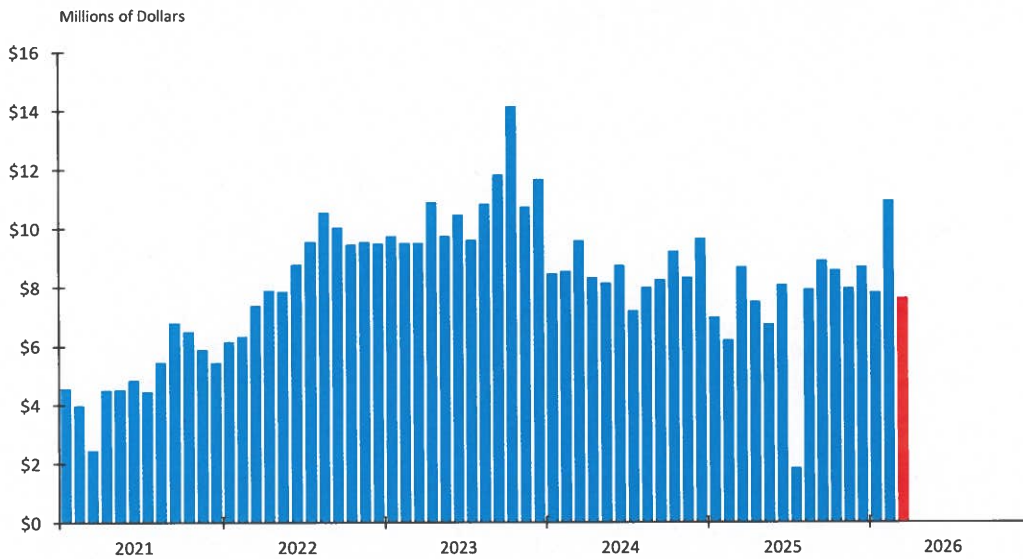
► The unemployment rate (SA) for Wyoming in March was 3.6%, higher than the March 2025 rate (3.2%), but lower than the March 2026 national unemployment rate (4.3%) (see Figure 4).

► Figure 5. Wyoming Total Nonfarm Employment (Seasonally Adjusted)



►► The total number of nonfarm payroll jobs in March was 294,600, higher than the March 2025 number by 100 (see Figure 5). This is the first year-over-year increase in total employment since May 2025.

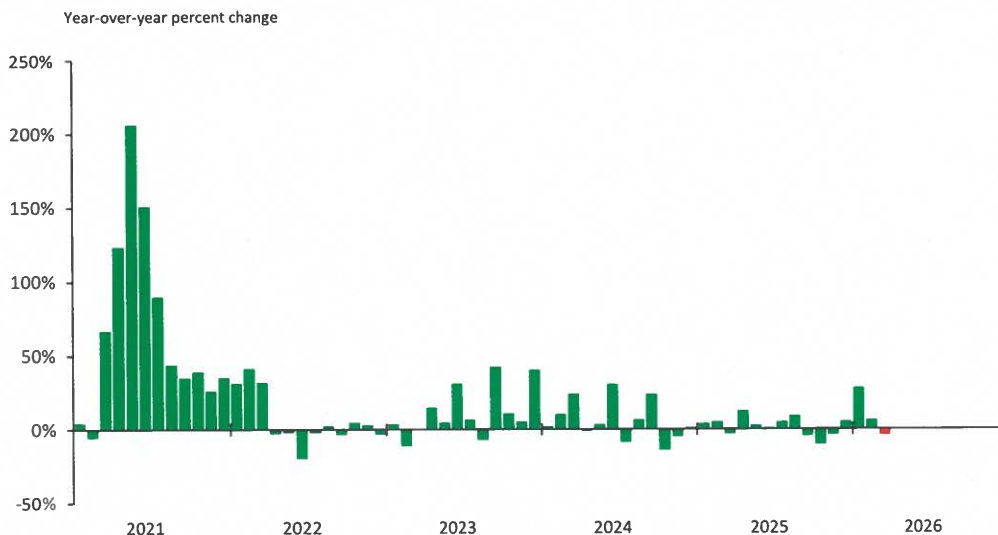
► Figure 6. Wyoming 4% Sales and Use Tax Collections - Mining Sector (1-Month Lag) - Nominal Dollars



►► Wyoming's collection of the 4% sales and use tax from the mining sector was \$7.6 million in March 2026, \$1.1 million less (-12.3%) than March 2025 (see Figure 6).

Note: The value for March 2026 in Figure 6 is actually collections from April 2026 because there is approximately a 1-month lag between collections and sales activity.

► Figure 7. Change in Wyoming 4% Sales and Use Tax Collections - Lodging (1-Month Lag) - Nominal Dollars



►► Wyoming's collection of the 4% sales and use tax from lodging was \$2.9 million in March, 4.2% lower than March 2025 (see Figure 7).

Note: The value for March 2026 in Figure 7 is actually based on collections from April 2026 because there is approximately a 1-month lag between collections and sales activity.

Wyoming Economic Health Index Addendum

The Wyoming Economic Health Index (WEHI) is a coincident economic indicator designed to provide a current assessment of the state's economy. There are four components of the WEHI. The first two components, unemployment rate and total nonfarm employment, are included to capture overall labor market activity for Wyoming. The third component, sales and use tax collections related to the mining sector, captures economic activity related to mineral production in the state. The fourth component, sales and use tax collections related to lodging, serves as a proxy for tourism activity in the state.

Unemployment Rate: The first component of the WEHI is the unemployment rate. This statistic measures the percentage of people in Wyoming actively looking for work but do not have jobs. In the WEHI model, the employment rate (100% minus the unemployment rate) is indexed rather than the unemployment rate because an increase in the employment rate, similar to an increase in total employment, mining activity, and tourism activity, is considered to be a positive for the state's economy. The unemployment rate is available monthly, seasonally adjusted, from the U.S. Bureau of Labor Statistics.

Total Nonfarm Employment: The second component of the WEHI is total nonfarm employment. This statistic measures the number of people who have wage or salary jobs in Wyoming. The total nonfarm employment is available monthly, seasonally adjusted, from the U.S. Bureau of Labor Statistics.

Mining Sales & Use Tax: The third component of the WEHI is the sales and use tax collected from the mining sector (including oil and gas extraction). Because sales and use tax collections the state receives for a given month represent transactions that took place 4 to 6 weeks prior, the data is lagged one month in the WEHI model. This statistic is available monthly from the State of Wyoming's Department of Revenue. The data is adjusted for inflation using the Consumer Price Index for All Urban Consumers from the U.S. Bureau of Labor Statistics. The data is also seasonally adjusted.

Lodging Sales & Use Tax: The fourth component of the WEHI is sales and use tax collections from lodging. Again, because sales and use tax collections received by the state for a given month of transactions represent transactions that took place 4 to 6 weeks prior, the data is lagged one month in the WEHI model. This statistic is available monthly from the State of Wyoming's Department of Revenue. The data is adjusted for inflation using the Consumer Price Index for All Urban Consumers from the U.S. Bureau of Labor Statistics. The data is also seasonally adjusted.

Methodology: Each series for the components discussed above are standardized starting in January 2005, resulting in a value of 100 for each component and the WEHI. As each component changes from month to month, the WEHI value changes. Next, the standard deviation of each component's standardized series values is calculated, followed by the calculation of the inverse of each component's standard deviation. Next, the individual inverse standard deviations are standardized, resulting in weights that sum to 1. The rationale for this weighting approach is that the components that are more stable over time will have a smaller standard deviation and thus, a larger inverse standard deviation and weight. A large shift in a typically stable data series would provide a better signal of a change in the economy than a large shift in a data series that typically has large fluctuations. Therefore, this weighting approach allows the WEHI to put a larger weight on the more stable components so that if they do experience a large shift, the WEHI's value will be affected more to represent the change in the state's economic conditions. Lastly, a 3-month moving average is used in order to smooth out the index. This helps eliminate large "spikes" that may occur due to a certain component recording an unusually high or low value in a given month.