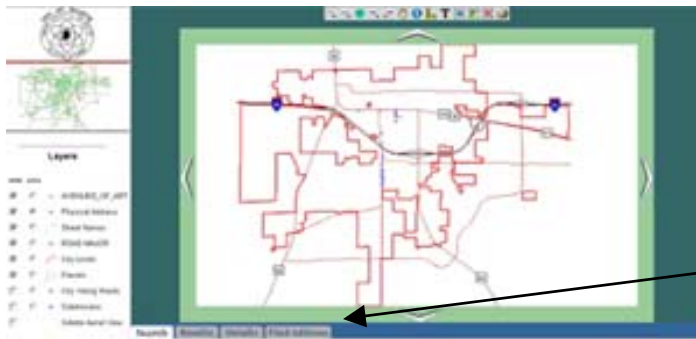
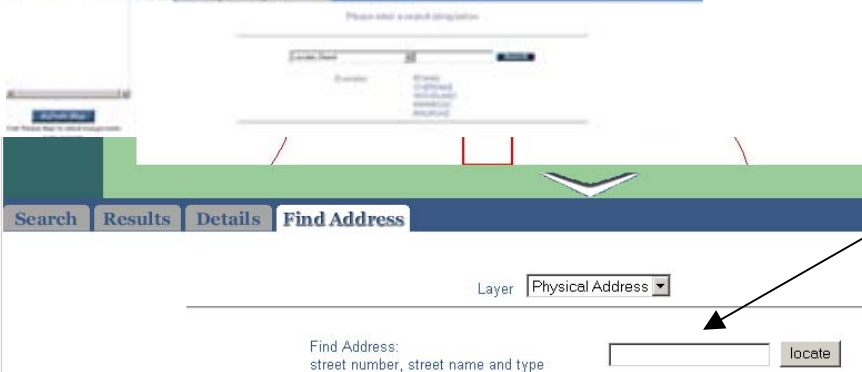


To look up your voting ward...

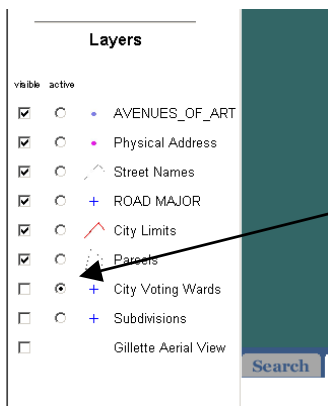
From the City of Gillette's **Home Page** (www.ci.gillette.wy.us), click on **City Online Map**. Click **Log In**. Please be patient as the application loads. It is ready when it looks like this:



Find and click the "Find Address" tab just below the map area.



Just left of the "locate" button, enter your street number, name, and type (street, drive, etc.). Click the "locate" button and a list of possible addresses will appear. Click on the number in front of your address and the map will zoom to your lot and place a star on your property.



In the Layers list to the left of the map, click the "active" radio button in front of "City Voting Wards" to make them active.

Note: The "visible" check box in front of each layer is used to show the layer in the map, but the "active" radio button in front of each layer defines from which layer you can identify additional information (e.g. your city ward).

Click the "Identify" button in the toolbar above the map (blue dot with a white "i").



Then click on your property.

Below the map, a detailed view appears to show your "City Voting Ward" and Council Members.

Detailed view for record 1

[View in new window](#) | [Print](#)

| Field | Value |
|----------|----------------|
| WARD | Ward 2 |
| MEMBER_1 | Stephen Hughes |

| Field | Value |
|----------|--------------|
| MEMBER_2 | Everett Booz |

You can use the G.I.S. map system to find a wealth of information attached to all of the City of Gillette map layers.

If you have problems, please send an e-mail to ggis@ci.gillette.wy.us for assistance.